

# St Patrick's Day Jig

Traditional

Key of C - written for Low G Ukulele

Strum Pattern - D u d u

Swing

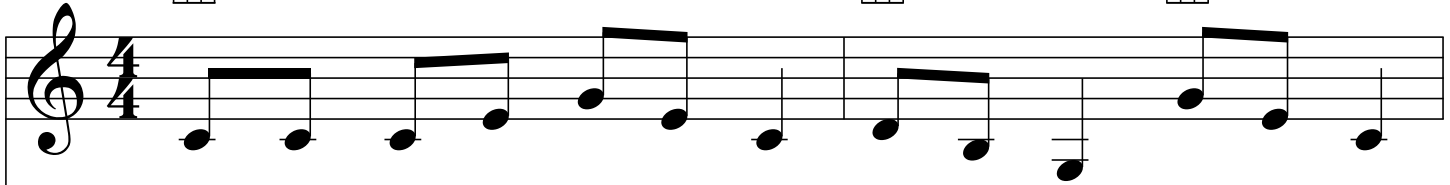
C



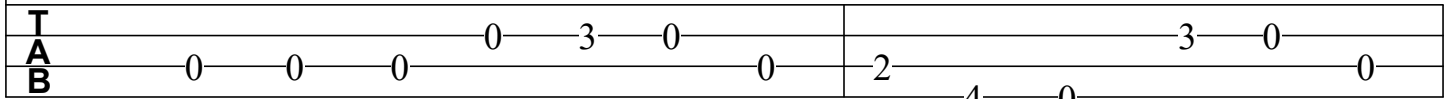
G



C



Let's wear green and dance a jig, dance a jig, dance a jig.  
 Twirl your part - ner round a - bout, round a - bout, round a - bout.  
 All join hands and cir - cle 'round, cir - cle 'round, cir - cle 'round.



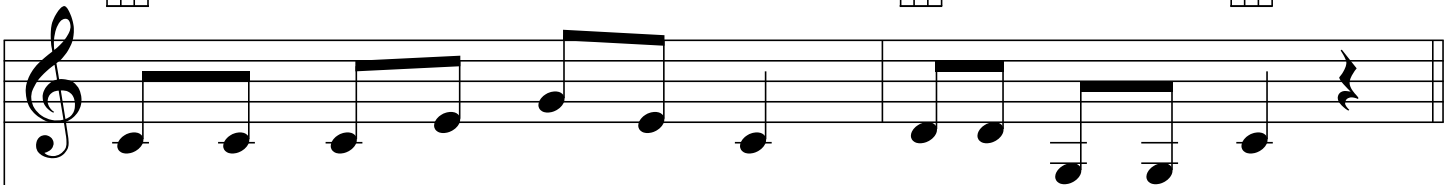
C



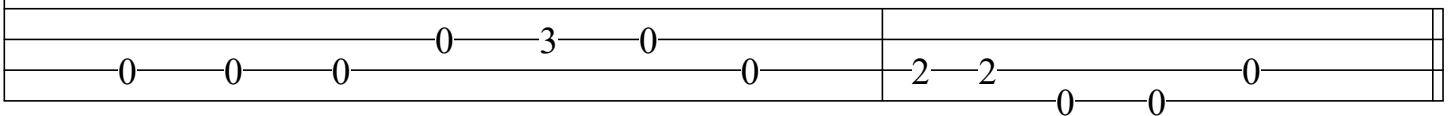
G



C



Let's wear green and dance a jig on St. Pat-rick's Day.  
 Twirl your part - ner round a - bout, on St. Pat-rick's Day.  
 All join hands and cir - cle 'rout, on St. Pat-rick's Day.



This version is also possible to play on piano at the same range kid's would sing.

Use this blank space to plan your own dance moves for the first verse: