

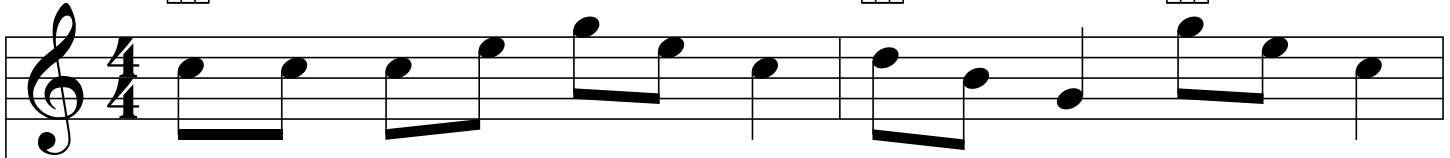
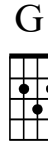
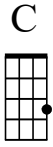
St Patrick's Day Jig

Traditional

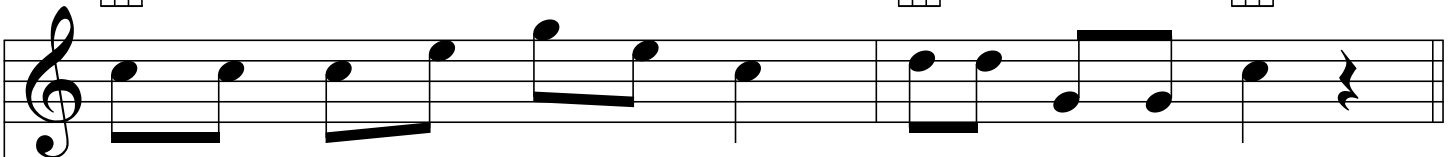
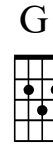
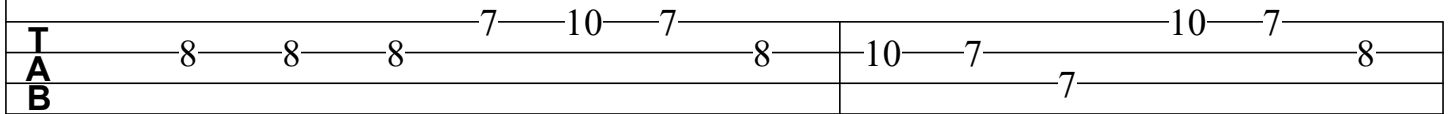
Key of C - written for High G Ukulele

Strum Pattern - D u d u

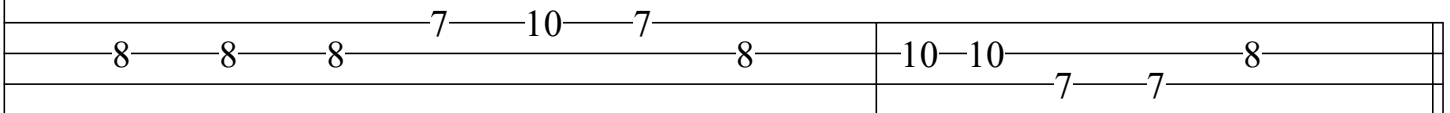
Swing



Let's wear green and dance a jig, dance a jig, dance a jig.
 Twirl your part - ner round a - bout, round a - bout, round a - bout.
 All join hands and cir - cle 'round, cir - cle 'round, cir - cle 'round.



Let's wear green and dance a jig on St. Pat-rick's Day.
 Twirl your part - ner round a - bout, on St. Pat-rick's Day.
 All join hands and cir - cle 'rount, on St. Pat-rick's Day.



When plucking the ukulele melody, singing voices should be an octave lower.

Use this blank space to plan your own dance moves for the first verse: